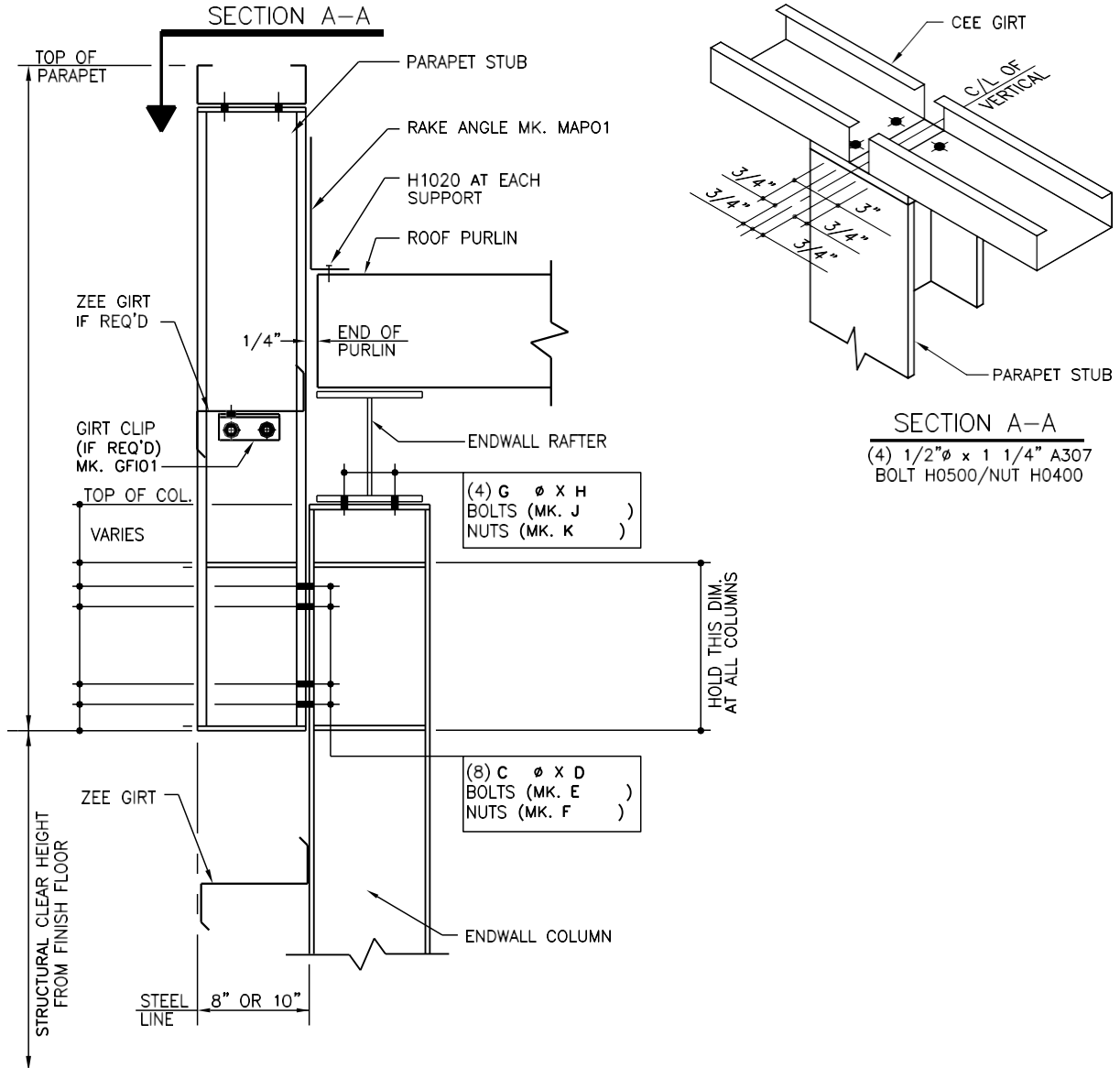


TABLE OF CONTENTS

| | |
|--|----|
| AS0010 – Post and Beam Endwall, Bypass Girts | 2 |
| AS0020 – Post and Beam Endwall, Inset Girts | 3 |
| AS0030 – Post and Beam Endwall, Flush Girts | 4 |
| AS0040 – High Eave, Bypass Girts..... | 5 |
| AS0050 – High Eave, Inset Girts..... | 6 |
| AS0060 – High Eave, Flush Girts..... | 7 |
| AS0070 – Rigid Frame Endwall, 8” Bypass Girts | 8 |
| AS0080 – Rigid Frame Endwall, 10” Bypass Girts | 9 |
| AS0090 – Rigid Frame Endwall, Inset Girts | 10 |
| AS0100 – Rigid Frame Endwall, Flush Girts | 11 |
| AS0110 – Low Eave, Bypass Girts | 12 |
| AS0120 – Low Eave, Inset Girts..... | 13 |
| AS0130 – Low Eave, Flush Girts..... | 14 |

AS0010 – POST AND BEAM ENDWALL, BYPASS GIRTS



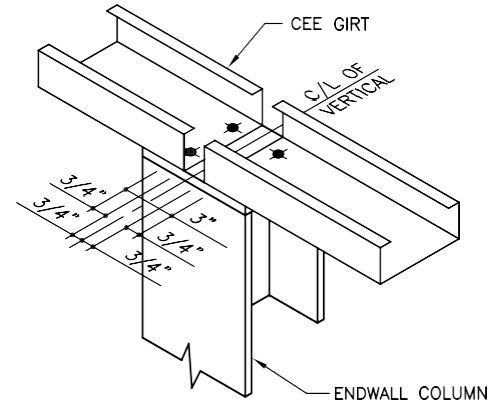
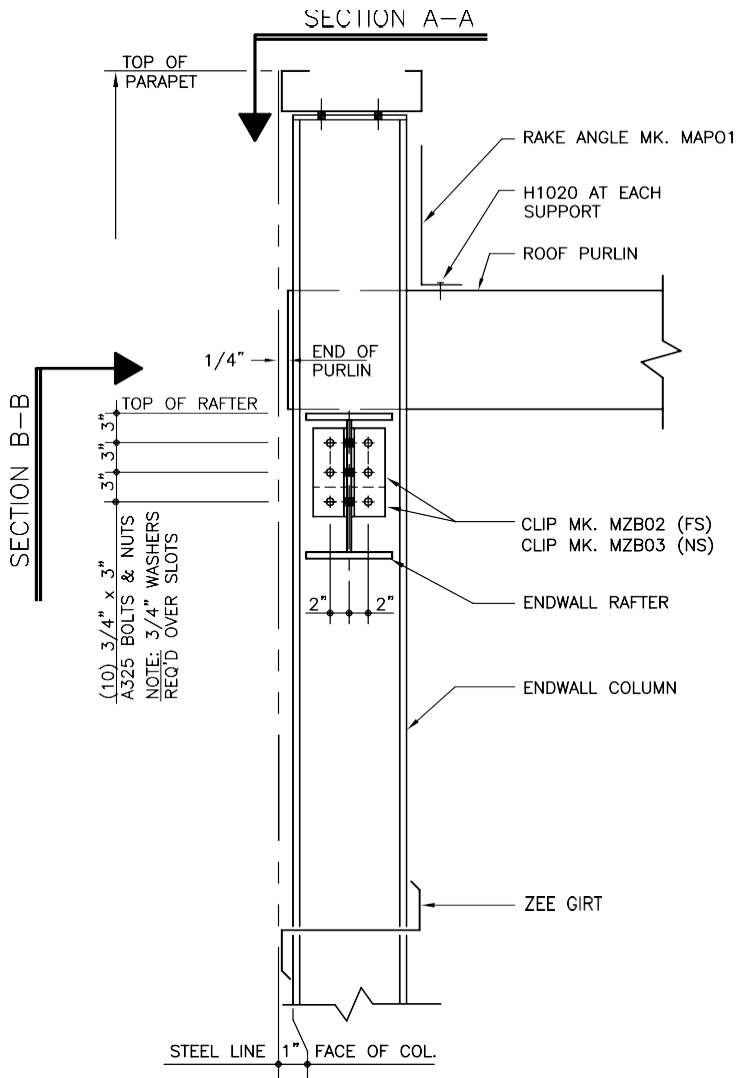
ENDWALL PARAPET STRUCTURAL

POST AND BEAM ENDWALL WITH BYPASS GIRTS

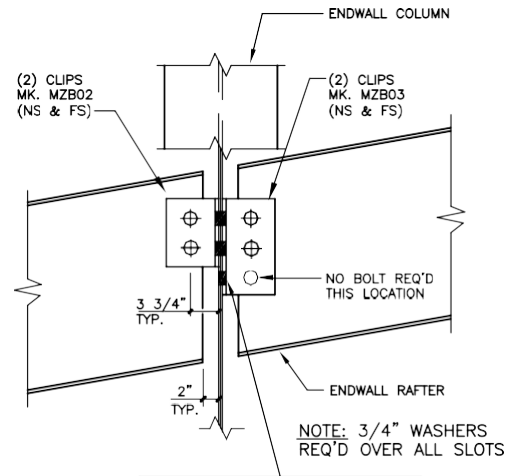
REFERENCE ERECTOR NOTE FOR TYPICAL WASHER REQUIREMENTS

AS0010

AS0020 – POST AND BEAM ENDWALL, INSET GIRTS



SECTION A-A
(4) 1/2"Ø x 1 1/4" A307
BOLT H0500/NUT H0400



ERECTION BOLT PROVIDED TO ALLOW INDEPENDENT SETTING OF RAFTERS. NO ROOF LOADS SHALL BE APPLIED TO RAFTERS UNTIL ALL BOLTS ARE IN PLACE AND TIGHTENED.

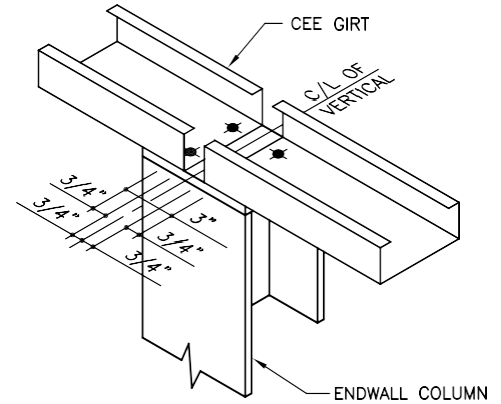
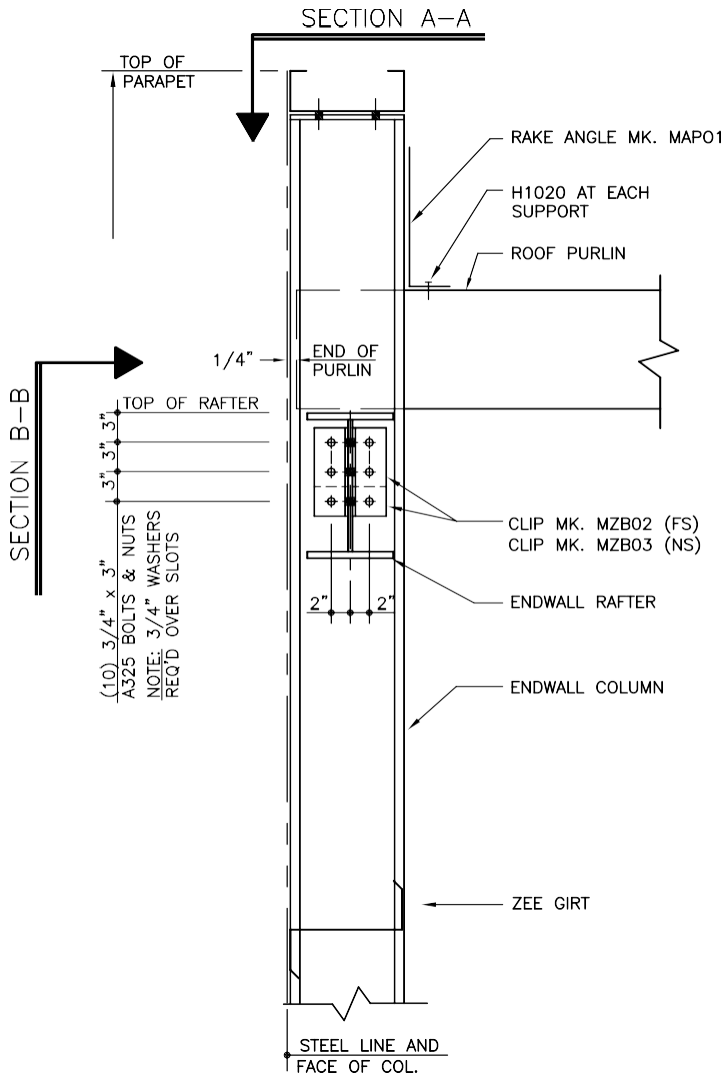
SECTION B-B

ENDWALL PARAPET STRUCTURAL

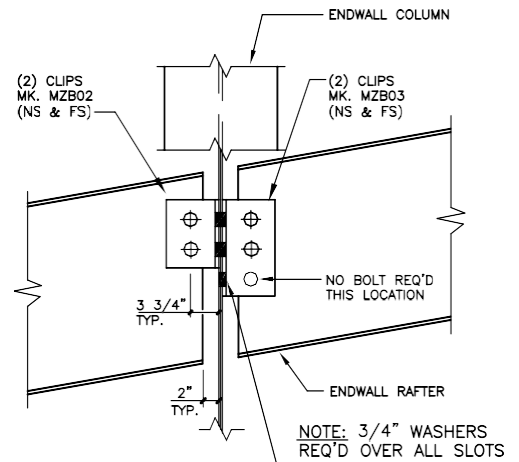
POST AND BEAM ENDWALL WITH INSET GIRTS
REFERENCE ERECTOR NOTE FOR TYPICAL WASHER REQUIREMENTS

AS0020

AS0030 – POST AND BEAM ENDWALL, FLUSH GIRTS



SECTION A-A
(4) 1/2"Ø x 1 1/4" A307
BOLT H0500/NUT H0400



ERECTION BOLT PROVIDED TO ALLOW INDEPENDENT SETTING OF RAFTERS. NO ROOF LOADS SHALL BE APPLIED TO RAFTERS UNTIL ALL BOLTS ARE IN PLACE AND TIGHTENED.

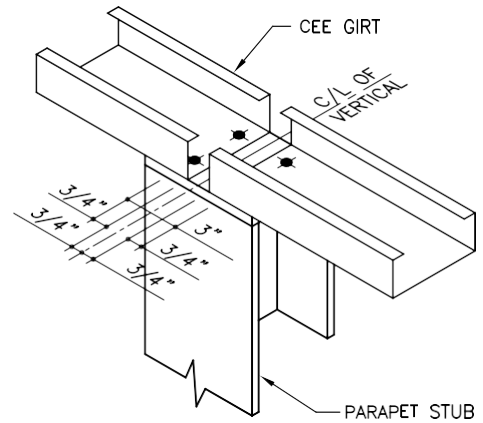
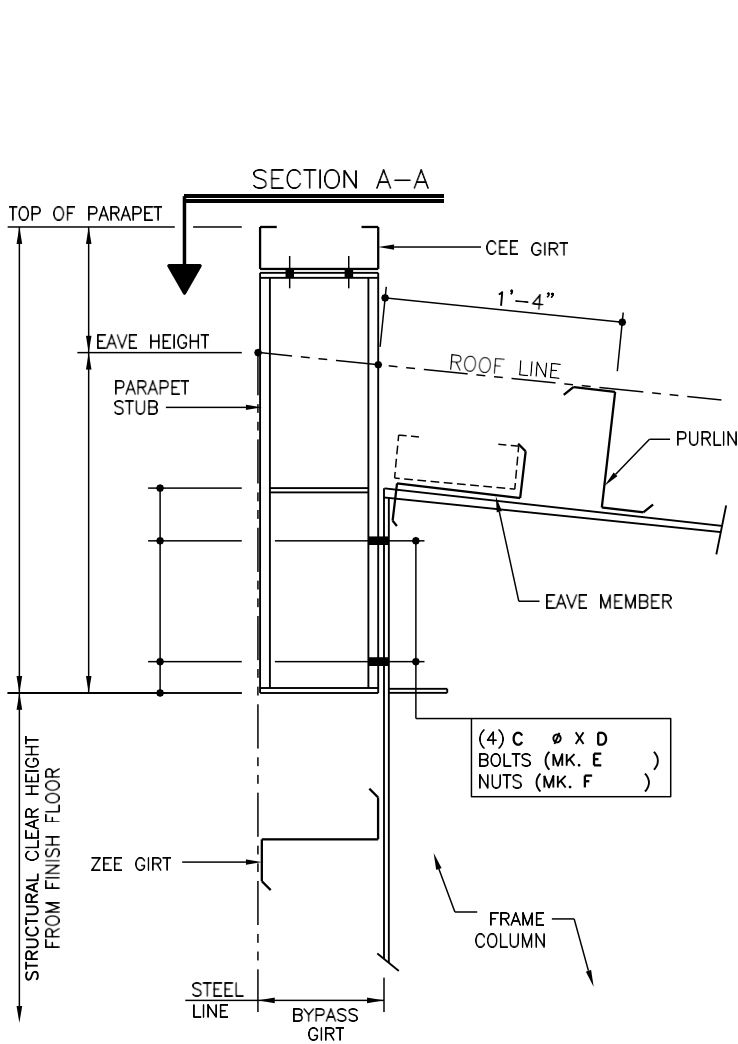
SECTION B-B

ENDWALL PARAPET STRUCTURAL

POST AND BEAM ENDWALL WITH INSET GIRTS
REFERENCE ERECTOR NOTE FOR TYPICAL WASHER REQUIREMENTS

AS0020

AS0040 – HIGH EAVE, BYPASS GIRTS



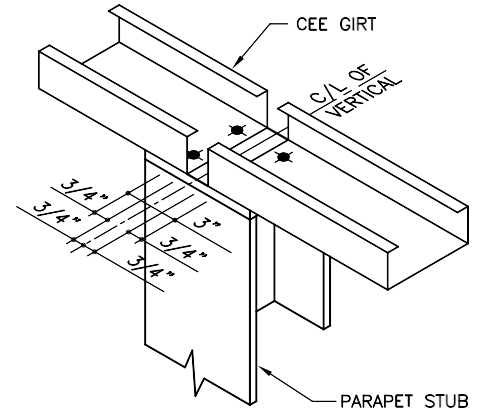
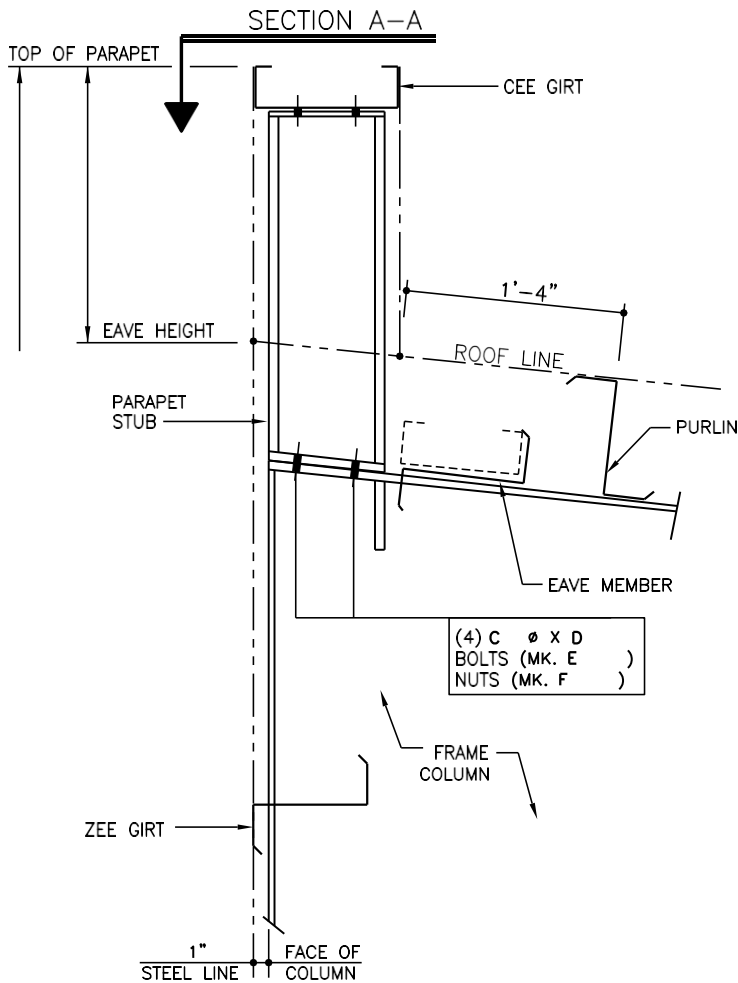
SECTION A-A
(4) 1/2"Ø x 1 1/4" A307
BOLT H0500/NUT H0400

HIGH SIDEWALL PARAPET STRUCTURAL

INTERMEDIATE FRAMES WITH BYPASS GIRTS
REFERENCE ERECTOR NOTE FOR TYPICAL WASHER REQUIREMENTS

AS0040

AS0050 – HIGH EAVE, INSET GIRTS



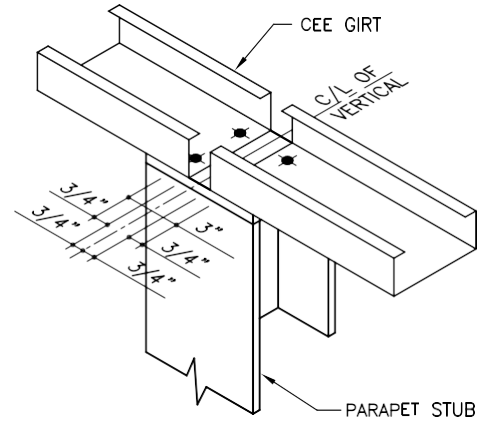
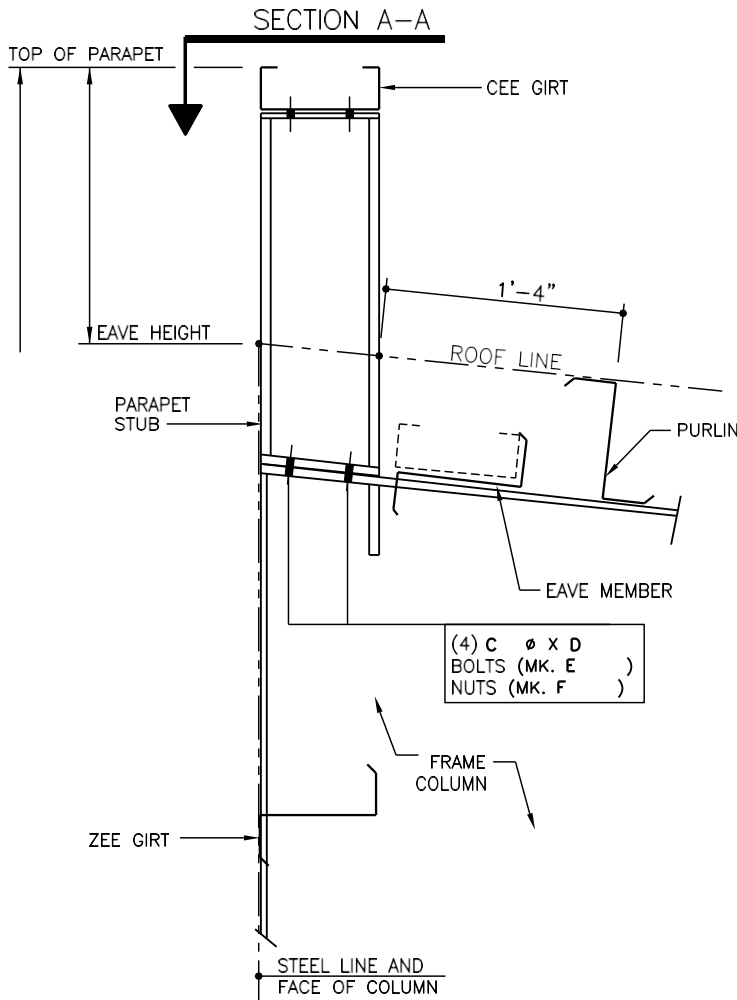
SECTION A-A
(4) 1/2"Ø x 1 1/4" A307
BOLT H0500/NUT H0400

HIGH SIDEWALL PARAPET STRUCTURAL

INTERMEDIATE FRAMES WITH INSET GIRTS
REFERENCE ERECTOR NOTE FOR TYPICAL WASHER REQUIREMENTS

AS0050

AS0060 – HIGH EAVE, FLUSH GIRTS



SECTION A-A
(4) 1/2"Ø x 1 1/4" A307
BOLT H0500/NUT H0400

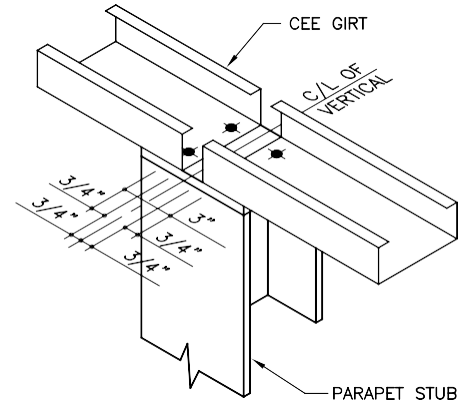
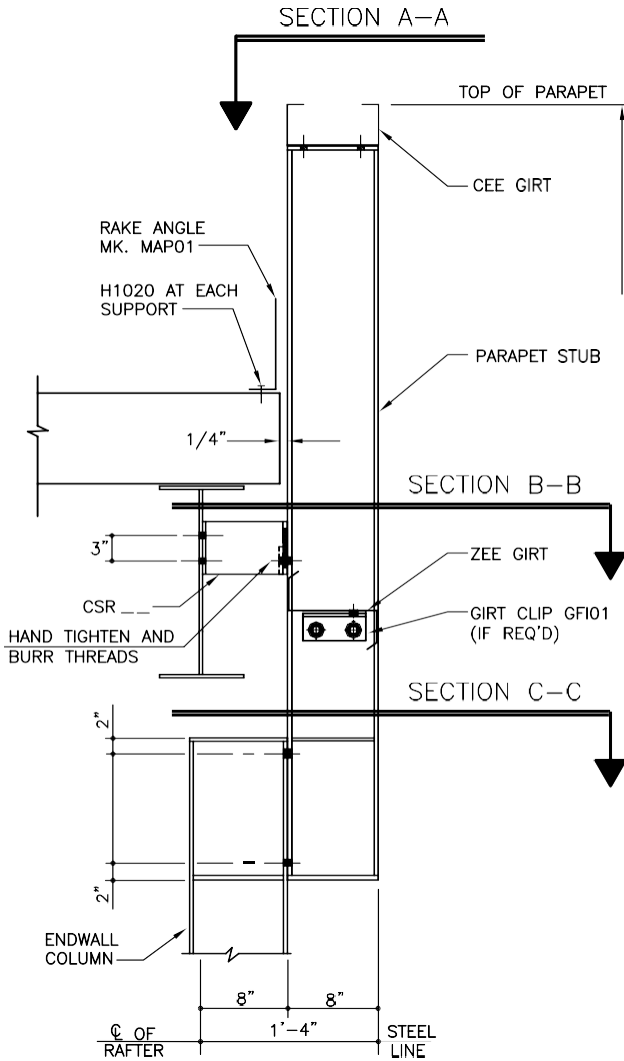
HIGH SIDEWALL PARAPET STRUCTURAL

INTERMEDIATE FRAMES WITH FLUSH GIRTS

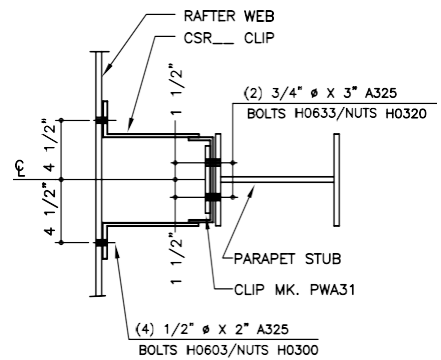
REFERENCE ERECTOR NOTE FOR TYPICAL WASHER REQUIREMENTS

AS0060

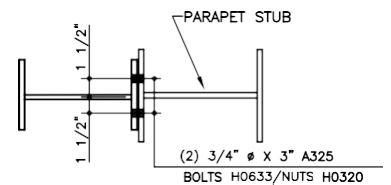
AS0070 – RIGID FRAME ENDWALL, 8” BYPASS GIRTS



SECTION A-A
(4) 1/2" ϕ x 1 1/4" A307
BOLT H0500/NUT H0400



SECTION B-B
(4) 1/2" ϕ x 2" A325
BOLTS H0603/NUTS H0300



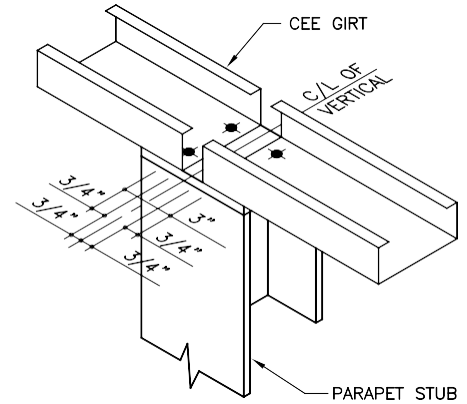
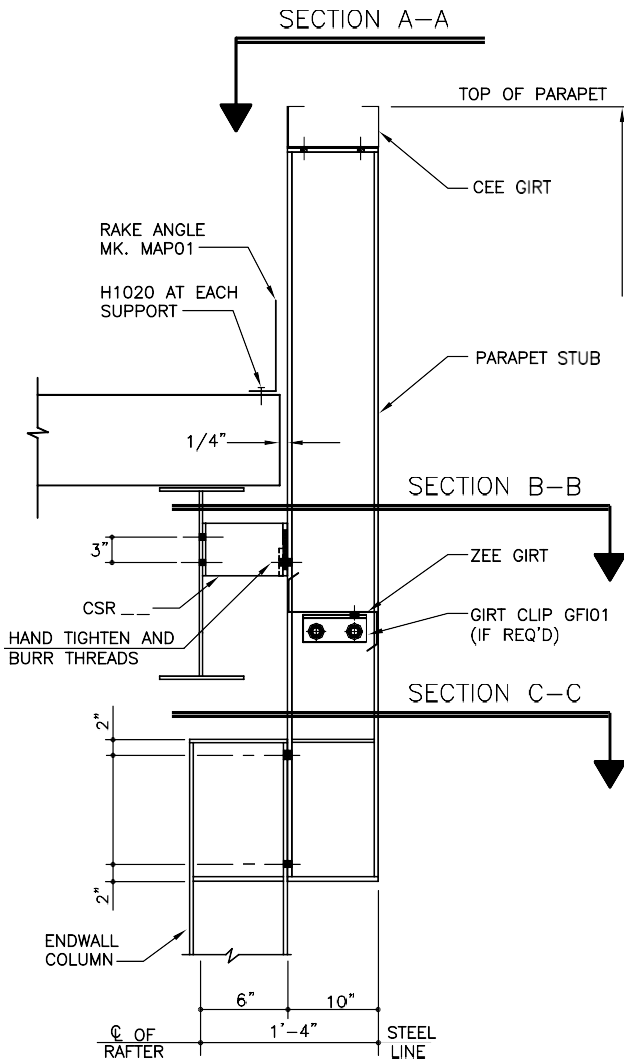
SECTION C-C
(2) 3/4" ϕ x 3" A325
BOLTS H0633/NUTS H0320

ENDWALL PARAPET STRUCTURAL

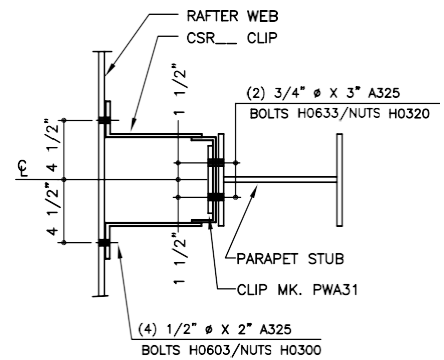
RIGID FRAME ENDWALL WITH BYPASS GIRTS
REFERENCE ERECTOR NOTE FOR TYPICAL WASHER REQUIREMENTS

AS0070

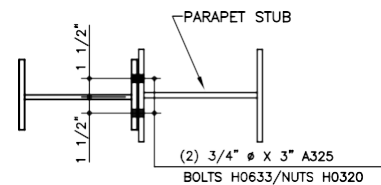
AS0080 – RIGID FRAME ENDWALL, 10" BYPASS GIRTS



SECTION A-A
(4) 1/2" ϕ x 1 1/4" A307
BOLT H0500/NUT H0400



SECTION B-B



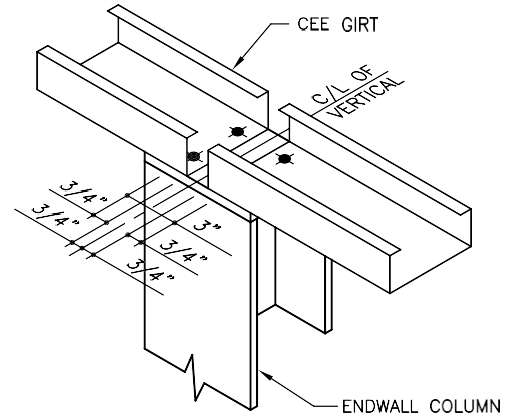
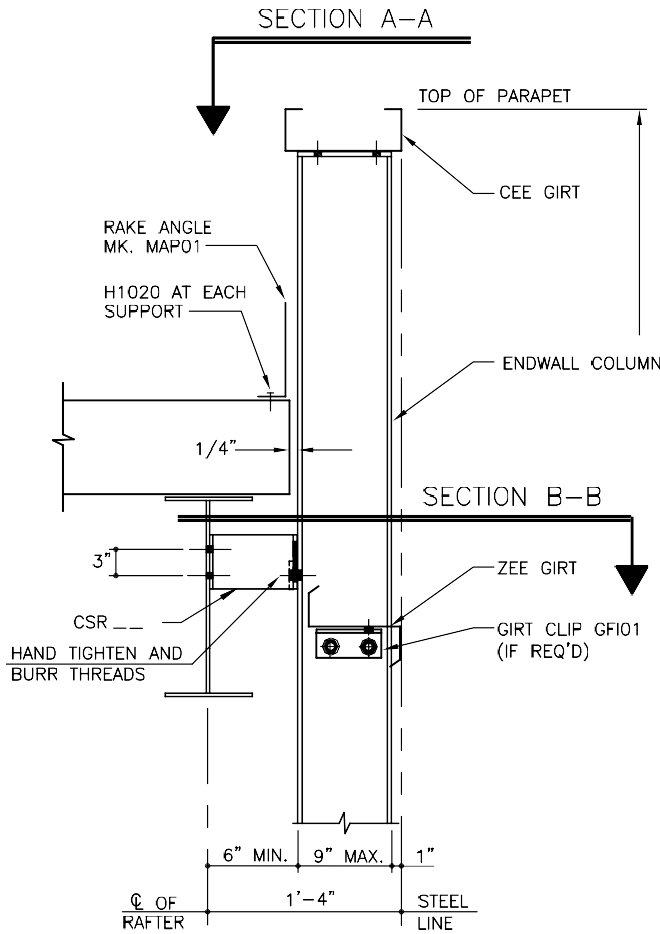
SECTION C-C

ENDWALL PARAPET STRUCTURAL

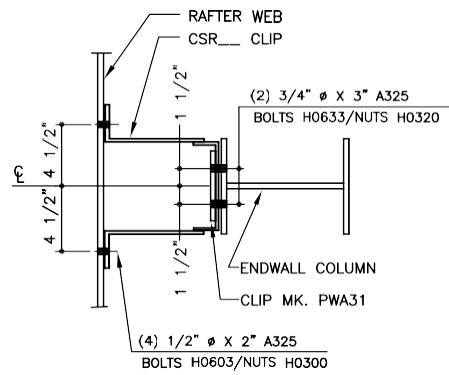
RIGID FRAME ENDWALL WITH BYPASS GIRTS
REFERENCE ERECTOR NOTE FOR TYPICAL WASHER REQUIREMENTS

AS0080

AS0090 – RIGID FRAME ENDWALL, INSET GIRTS



SECTION A-A
(4) 1/2" ϕ x 1 1/4" A307
BOLT H0500/NUT H0400



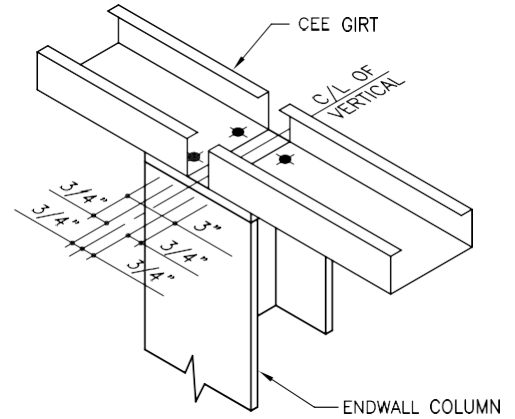
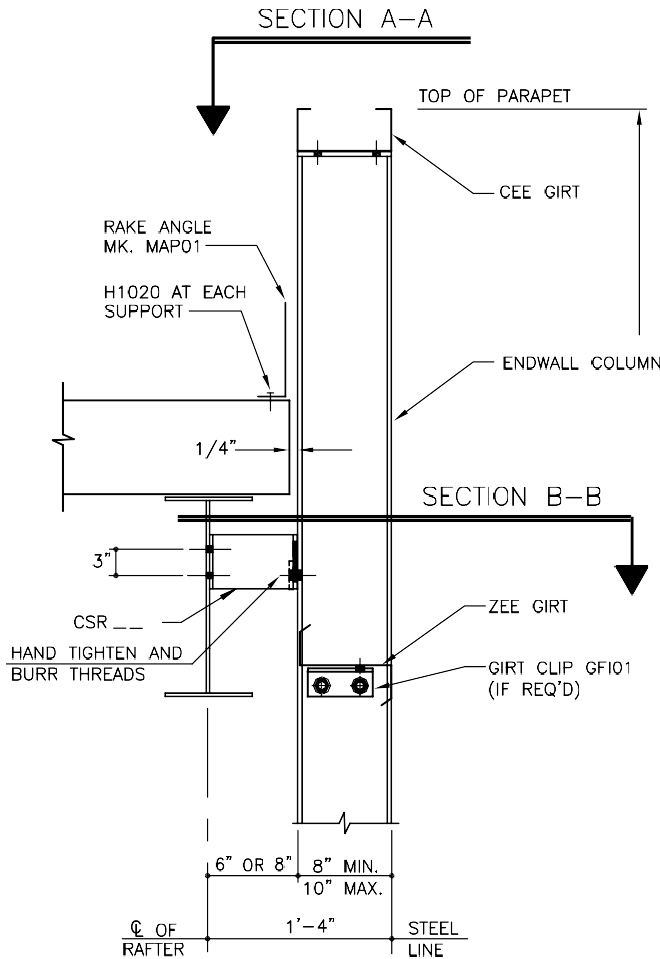
SECTION B-B

ENDWALL PARAPET STRUCTURAL

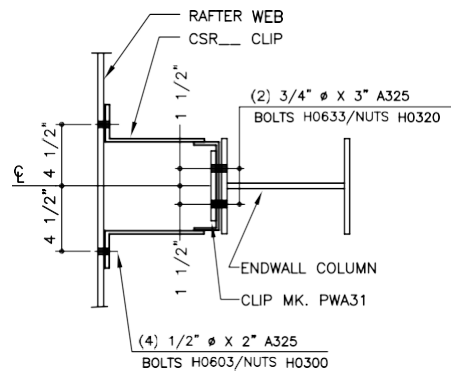
RIGID FRAME ENDWALL WITH INSET GIRTS
REFERENCE ERECTOR NOTE FOR TYPICAL WASHER REQUIREMENTS

AS0090

AS0100 – RIGID FRAME ENDWALL, FLUSH GIRTS



SECTION A-A
(4) 1/2" ϕ x 1 1/4" A307
BOLT H0500/NUT H0400



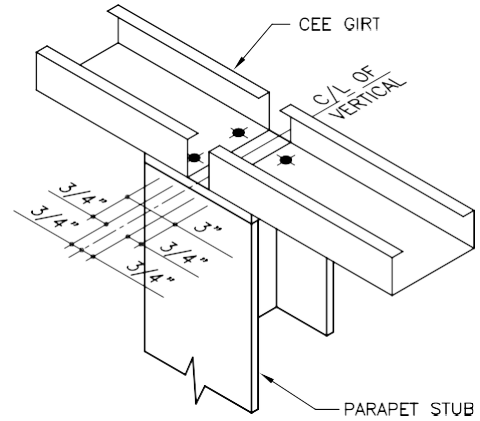
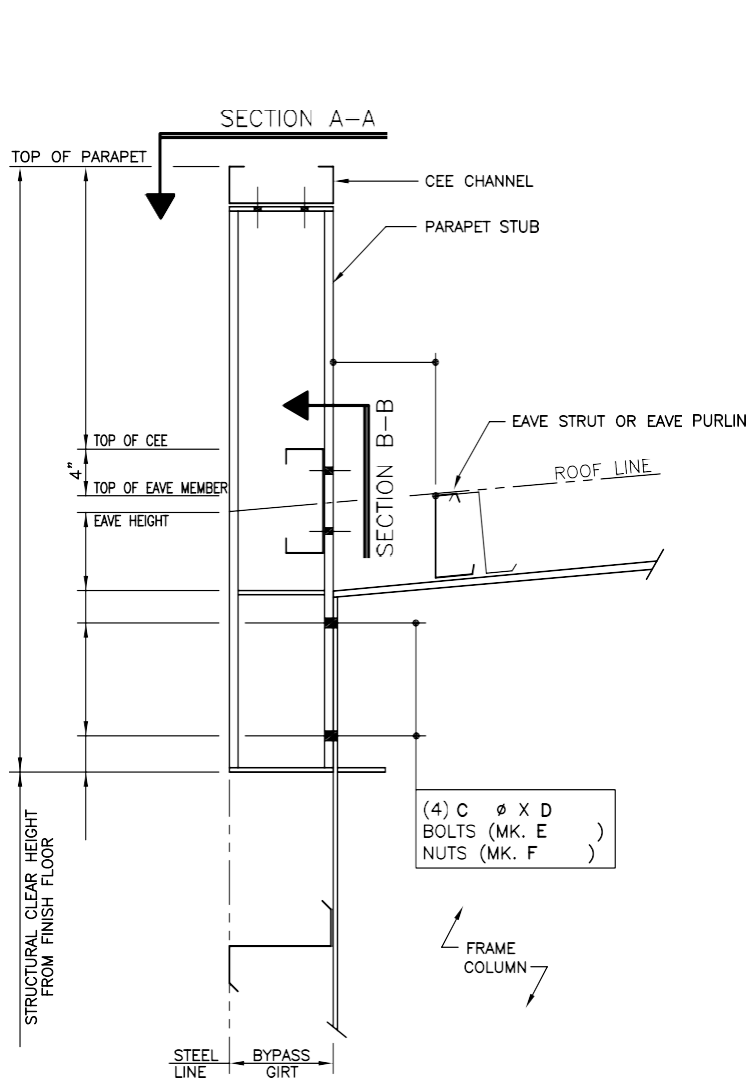
SECTION B-B

ENDWALL PARAPET STRUCTURAL

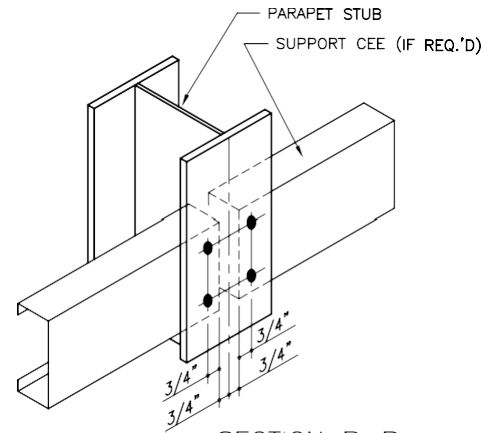
RIGID FRAME ENDWALL WITH FLUSH GIRTS
REFERENCE ERECTOR NOTE FOR TYPICAL WASHER REQUIREMENTS

AS0100

AS0110 – LOW EAVE, BYPASS GIRTS



SECTION A-A
(4) 1/2"Ø x 1 1/4" A307
BOLT H0500/NUT H0400



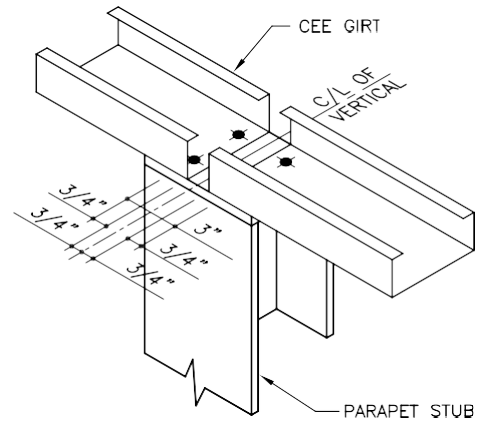
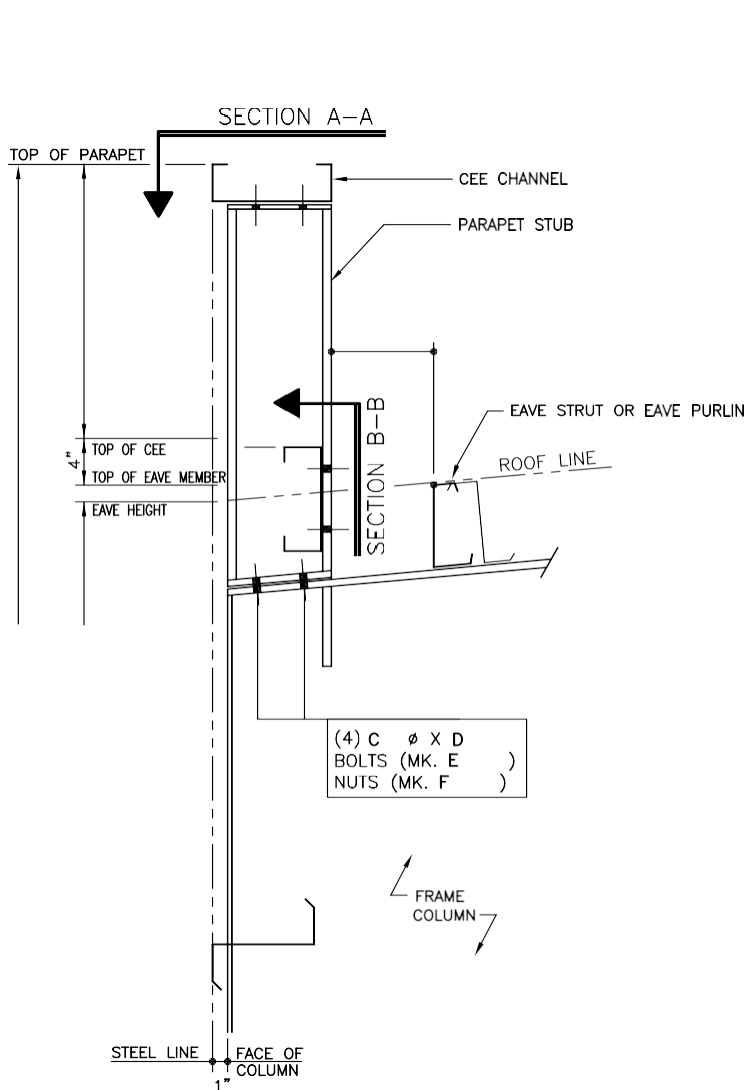
SECTION B-B
(4) 1/2"Ø x 1 1/4" A307
THIN HEAD BOLT H0515/NUT H0400

LOW SIDEWALL PARAPET STRUCTURAL

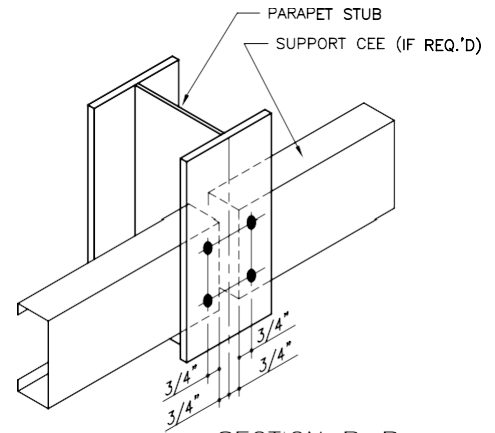
INTERMEDIATE FRAMES WITH BYPASS GIRTS
REFERENCE ERECTOR NOTE FOR TYPICAL WASHER REQUIREMENTS

AS0110

AS0120 – LOW EAVE, INSET GIRTS



SECTION A-A
(4) 1/2" ϕ x 1 1/4" A307
BOLT H0500/NUT H0400



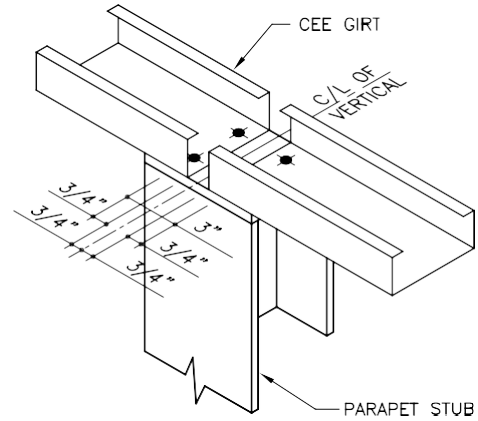
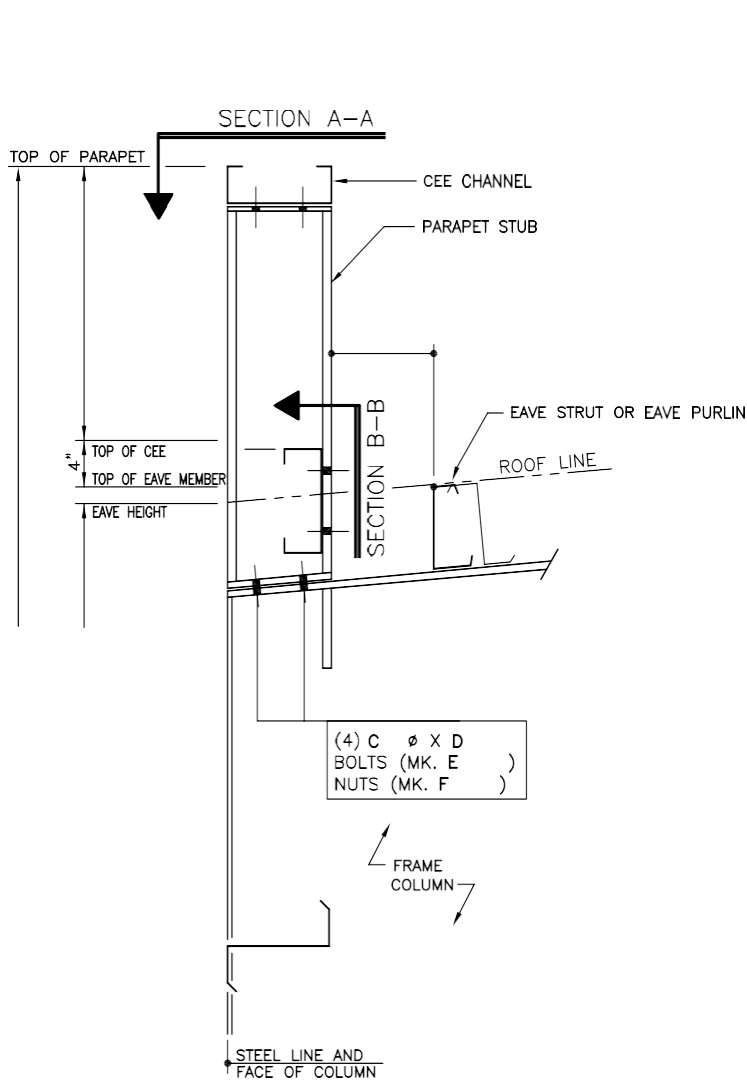
SECTION B-B
(4) 1/2" ϕ x 1 1/4" A307
THIN HEAD BOLT H0515/NUT H0400

LOW SIDEWALL PARAPET STRUCTURAL

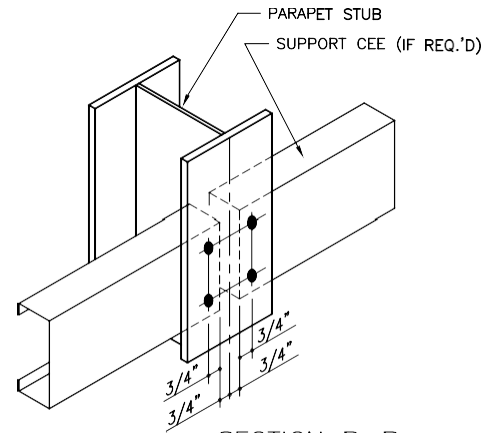
INTERMEDIATE FRAMES WITH INSET GIRTS
REFERENCE ERECTOR NOTE FOR TYPICAL WASHER REQUIREMENTS

AS0120

AS0130 – LOW EAVE, FLUSH GIRTS



SECTION A-A
(4) 1/2"ø x 1 1/4" A307
BOLT H0500/NUT H0400



SECTION B-B
(4) 1/2"ø x 1 1/4" A307
THIN HEAD BOLT H0515/NUT H0400

LOW SIDEWALL PARAPET STRUCTURAL

INTERMEDIATE FRAMES WITH FLUSH GIRTS
REFERENCE ERECTOR NOTE FOR TYPICAL WASHER REQUIREMENTS

AS0130